

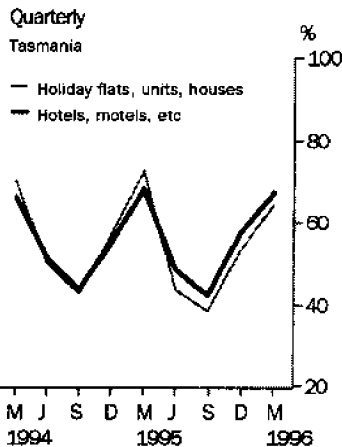
# TOURIST ACCOMMODATION

TASMANIA

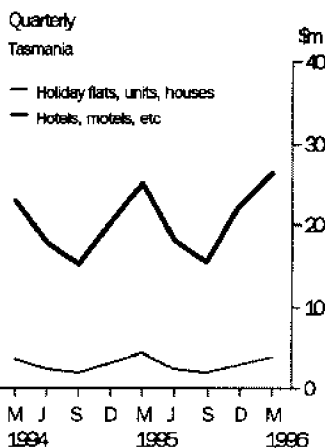
EMBARGOED UNTIL 11:30AM THURS 20 JUNE 1996

## MARCH QTR KEY FIGURES

### Occupancy rates



### Accommodation takings



	Mar 95	Mar 96	change
<b>Hotels, Motels and Guest Houses</b>			
Rooms available (No.)	5 380	5 520	2.6 %
Room occupancy rate (%)	68.2	67.1	-1.1 pts
Takings from accommodation (\$'000)	24 963	26 267	5.2 %
<b>Holiday Flats, Units and Houses</b>			
Units, etc. available (No.)	867	830	-4.3 %
Unit occupancy rate (%)	72.7	64.2	-8.5 pts
Takings from accommodation (\$'000)	4 391	3 835	-12.7 %
<b>Caravan Parks</b>			
Sites, cabins, etc. available (No.)	6 834	6 524	-4.5 %
Site occupancy rate (%)	39.2	42.1	2.9 pts
Takings from accommodation (\$'000)	2 886	3 126	8.3 %
<b>Visitor Hostels</b>			
Bed spaces available (No.)	1 786	1 727	-3.3 %
Bed occupancy rate (%)	29.0	30.6	1.6 pts
Takings from accommodation (\$'000)	547	580	6.0 %

## MARCH QTR KEY POINTS

### MIXED OCCUPANCY RESULTS

- Demand for accommodation in hotels, motels and guest houses increased in March quarter 1996 compared with March quarter 1995 by a lower proportion than an increase in room supply. The room occupancy rate consequently fell from 68.2% to 67.1%, but was nonetheless quite high compared to other March quarter results in recent years.
- For holiday flats, units and houses, unit nights occupied decreased by a substantially larger proportion than a fall in capacity available, resulting in a fall of 8.5 percentage points to 64.2% in the unit occupancy rate.
- For caravan parks and for visitor hostels, demand increased in March quarter 1996 compared with March quarter 1995 while available capacity decreased. Occupancy rate rises of 2.9 percentage points for caravan parks and 1.6 points for visitor hostels were recorded.

### TAKINGS FROM ACCOMMODATION

- Accommodation takings rose in March quarter 1996 compared with March quarter 1995 for each establishment type other than holiday flats, units and houses.
- In terms of average takings per night occupied, moderate increases were recorded for all establishment types.

### NOTES

- For further information about these and related statistics, contact Jennifer Cox on 07 3222 6148, or any ABS Office.

# NOTES

## FORTHCOMING ISSUES

*ISSUE (Quarter)*

*EXPECTED RELEASE DATE*

June 1996

19 September 1996

.....

## CHANGES IN THIS ISSUE

Quarterly data rather than monthly data are now plotted in the diagrams on the front cover page.

.....

JOHN H. STRUIK

Acting Deputy Commonwealth Statistician

TABLE 1 — SUMMARY OF HOTELS, MOTELS AND GUEST HOUSES WITH FACILITIES, TASMANIA

Particulars	Unit	Quarter ended				Year ended			
		December 1994	March 1995	June 1995	September 1995	December 1995	March 1996	March 1995	March 1996
<b>LICENSED HOTELS WITH FACILITIES</b>									
Establishments	No.	92	91	92	92	92	92	..	..
Guest rooms	No.	3,526	3,511	3,545	3,566	3,566	3,580	..	..
Bed spaces	No.	9,921	9,908	9,932	9,946	9,911	9,924	..	..
Employment (persons)	No.	3,576	3,500	3,403	3,445	3,772	3,659	..	..
Room nights occupied	No.	177,580	209,797	157,516	140,180	186,265	211,766	696,426	695,727
Room occupancy rate	per cent	54.9	66.4	48.8	42.7	56.8	65.0	54.4	53.3
Guest nights	No.	302,266	367,621	261,030	228,065	309,095	371,418	1,173,261	1,169,608
Bed occupancy rate	per cent	33.2	41.2	28.9	24.9	33.9	41.1	32.4	32.2
Guest arrivals	No.	170,077	204,917	139,779	120,236	166,013	201,995	643,937	628,023
Average length of stay	days	1.8	1.8	1.9	1.9	1.9	1.8	1.8	1.9
Takings from accommodation	\$'000	14,188	16,898	12,719	11,026	15,252	17,496	54,856	56,492
<b>MOTELS AND GUEST HOUSES WITH FACILITIES</b>									
Establishments	No.	85	86	87	87	88	88	..	..
Guest rooms	No.	1,828	1,869	1,863	1,886	1,937	1,940	..	..
Bed spaces	No.	5,674	5,780	5,767	5,781	5,981	6,075	..	..
Employment (persons)	No.	815	856	749	777	874	884	..	..
Room nights occupied	No.	94,786	120,509	80,573	70,947	102,522	125,440	366,441	379,482
Room occupancy rate	per cent	56.4	71.6	47.6	40.9	57.5	71.1	54.8	54.4
Guest nights	No.	175,667	235,646	148,175	130,033	187,096	237,395	686,328	702,699
Bed occupancy rate	per cent	33.7	45.3	28.3	24.5	34.0	42.9	33.3	32.5
Guest arrivals	No.	105,336	135,180	89,147	74,128	106,934	139,100	396,802	409,309
Average length of stay	days	1.7	1.7	1.7	1.8	1.7	1.7	1.7	1.7
Takings from accommodation	\$'000	5,971	8,064	5,235	4,475	6,838	8,771	23,294	25,319
<b>TOTAL HOTELS, MOTELS AND GUEST HOUSES WITH FACILITIES</b>									
Establishments	No.	177	177	179	179	180	180	..	..
Guest rooms	No.	5,354	5,380	5,408	5,452	5,503	5,520	..	..
Bed spaces	No.	15,595	15,688	15,699	15,727	15,892	15,999	..	..
Employment (persons)	No.	4,391	4,356	4,152	4,222	4,646	4,543	..	..
Room nights occupied	No.	272,366	330,306	238,089	211,127	288,787	337,206	1,062,867	1,075,209
Room occupancy rate	per cent	55.4	68.2	48.4	42.1	57.0	67.1	54.5	53.7
Guest nights	No.	477,933	603,267	409,205	358,098	496,191	608,813	1,859,589	1,872,307
Bed occupancy rate	per cent	33.3	42.7	28.7	24.8	33.9	41.8	32.7	32.3
Guest arrivals	No.	275,413	340,097	228,926	194,364	272,947	341,095	1,040,739	1,037,332
Average length of stay	days	1.7	1.8	1.8	1.8	1.8	1.8	1.8	1.8
Takings from accommodation	\$'000	20,159	24,963	17,954	15,501	22,090	26,267	78,149	81,811

TABLE 2 — SUMMARY OF CARAVAN PARKS, TASMANIA

Particulars	Unit	Quarter ended				Year ended			
		December 1994	March 1995	June 1995	September 1995	December 1995	March 1996	March 1995	March 1996
<b>SHORT-TERM CARAVAN PARKS</b>									
Establishments	No.	63	63	63	59	59	59	..	..
Capacity									
On-site vans	No.	276	272	273	248	259	244	..	..
Other powered sites	No.	3,095	3,090	3,101	2,895	2,907	2,980	..	..
Unpowered sites	No.	2,266	2,175	1,932	1,756	1,750	1,768	..	..
Cabins, etc.	No.	362	338	362	364	376	394	..	..
<i>Total capacity</i>	<i>No.</i>	<i>5,999</i>	<i>5,875</i>	<i>5,668</i>	<i>5,263</i>	<i>5,292</i>	<i>5,386</i>	..	..
Sites occupied by long-term guests	No.	273	280	269	216	221	211	..	..
Other sites permanently reserved	No.	986	1,021	1,018	984	1,050	1,061	..	..
Employment (persons)	No.	219	227	198	194	225	224	..	..
Site nights occupied	No.	169,002	211,504	156,710	134,839	166,716	213,884	667,858	672,149
Site occupancy rate	per cent	30.6	40.0	30.4	28.1	34.2	43.6	31.0	34.1
Takings from accommodation	\$'000	1,505	2,471	1,237	841	1,544	2,606	5,885	6,229
<b>LONG-TERM CARAVAN PARKS</b>									
Establishments	No.	12	12	12	13	13	13	..	..
Capacity									
On-site vans	No.	112	121	118	137	121	122	..	..
Other powered sites	No.	508	507	504	586	578	573	..	..
Unpowered sites	No.	238	233	233	340	360	351	..	..
Cabins, etc.	No.	96	98	102	91	89	92	..	..
<i>Total capacity</i>	<i>No.</i>	<i>954</i>	<i>959</i>	<i>957</i>	<i>1,154</i>	<i>1,148</i>	<i>1,138</i>	..	..
Sites occupied by long-term guests	No.	188	190	183	208	198	211	..	..
Other sites permanently reserved	No.	20	17	17	25	41	36	..	..
Employment (persons)	No.	47	43	40	44	46	49	..	..
Site nights occupied	No.	25,738	29,840	26,124	27,243	29,884	35,972	104,179	119,223
Site occupancy rate	per cent	29.3	34.6	30.0	25.7	28.3	34.7	30.1	29.6
Takings from accommodation	\$'000	313	416	286	270	378	520	1,290	1,454
<b>TOTAL CARAVAN PARKS</b>									
Establishments	No.	75	75	75	72	72	72	..	..
Capacity									
On-site vans	No.	388	393	391	385	380	366	..	..
Other powered sites	No.	3,603	3,597	3,605	3,481	3,485	3,553	..	..
Unpowered sites	No.	2,504	2,408	2,165	2,096	2,110	2,119	..	..
Cabins, etc.	No.	458	436	464	455	465	486	..	..
<i>Total capacity</i>	<i>No.</i>	<i>6,953</i>	<i>6,834</i>	<i>6,625</i>	<i>6,417</i>	<i>6,440</i>	<i>6,524</i>	..	..
Sites occupied by long-term guests	No.	461	470	452	424	419	422	..	..
Other sites permanently reserved	No.	1,006	1,038	1,035	1,009	1,091	1,097	..	..
Employment (persons)	No.	266	270	238	238	271	273	..	..
Site nights occupied	No.	194,740	241,344	182,834	162,082	196,600	249,856	772,037	791,372
Site occupancy rate	per cent	30.4	39.2	30.3	27.7	33.2	42.1	30.9	33.3
Takings from accommodation	\$'000	1,818	2,886	1,523	1,111	1,923	3,126	7,175	7,683

TABLE 3 — SUMMARY OF HOLIDAY FLATS, UNITS AND HOUSES, TASMANIA

Particulars	Unit	Quarter ended				Year ended			
		December 1994	March 1995	June 1995	September 1995	December 1995	March 1996	March 1995	March 1996
Letting entities	No.	52	55	54	54	54	54	..	..
Flats, units and houses									
Single bedroom	No.	265	272	230	226	235	235	..	..
Multiple bedroom	No.	551	595	600	595	595	595	..	..
<i>Total flats, units and houses</i>	<i>No.</i>	<i>816</i>	<i>867</i>	<i>830</i>	<i>821</i>	<i>830</i>	<i>830</i>	<i>..</i>	<i>..</i>
Bed spaces	No.	3,578	3,761	3,677	3,665	3,660	3,657	..	..
Employment (persons)	No.	339	382	295	343	367	356	..	..
Unit nights occupied	No.	42,775	56,752	32,897	28,778	40,351	48,512	166,739	150,538
Unit occupancy rate	per cent	57.0	72.7	43.6	38.3	52.8	64.2	55.8	49.8
Unit lettings	No.	21,186	26,177	15,872	13,236	19,731	23,801	78,833	72,640
Average length of stay	days	2.0	2.2	2.1	2.2	2.0	2.0	2.1	2.1
Takings from accommodation	\$'000	3,036	4,391	2,343	1,933	2,958	3,835	11,927	11,069

TABLE 4 — SUMMARY OF VISITOR HOSTELS, TASMANIA

Particulars	Unit	Quarter ended				Year ended			
		December 1994	March 1995	June 1995	September 1995	December 1995	March 1996	March 1995	March 1996
Establishments	No.	44	43	42	41	41	41	..	..
Bed spaces	No.	1,813	1,786	1,748	1,770	1,719	1,727	..	..
Employment (persons)	No.	112	115	113	95	110	112	..	..
Guest nights	No.	28,376	46,606	20,257	12,804	29,682	48,155	102,495	110,898
Bed occupancy rate	per cent	17.1	29.0	12.8	8.1	18.8	30.6	16.7	17.5
Guest arrivals	No.	17,106	28,328	12,733	8,046	19,053	32,208	62,393	72,040
Average length of stay	days	1.7	1.6	1.6	1.6	1.6	1.5	1.6	1.5
Takings from accommodation	\$'000	377	547	226	158	361	580	1,243	1,326

TABLE 5 — HOTELS, MOTELS AND GUEST HOUSES WITH FACILITIES BY STAR GRADING, TASMANIA

Particulars	Licensed hotels with facilities	Motels and guest houses	Star grading			Total
			1, 2 and Ungraded	3	4 and 5	
ESTABLISHMENTS, CAPACITY AND EMPLOYMENT						
<i>March quarter 1995—</i>						
Establishments	91	86	72	82	23	177
Guest rooms	3,511	1,869	1,332	2,570	1,478	5,380
Bed spaces	9,908	5,780	3,761	7,669	4,258	15,688
Employment (persons)	3,500	856	970	1,337	2,049	4,356
<i>March quarter 1996—</i>						
Establishments	92	88	65	85	30	180
Guest rooms	3,580	1,940	1,232	2,656	1,632	5,520
Bed spaces	9,924	6,075	3,404	7,934	4,661	15,999
Employment (persons)	3,659	884	837	1,481	2,225	4,543
ROOM NIGHTS OCCUPIED						
<i>March quarter 1995</i>	209,797	120,509	66,213	157,887	106,206	330,306
<i>1996—</i>						
January	66,331	40,729	18,126	53,188	35,746	107,060
February	70,115	40,531	18,903	53,956	37,787	110,646
March	75,320	44,180	20,771	59,028	39,701	119,500
<i>March quarter 1996</i>	211,766	125,440	57,800	166,172	113,234	337,206
ROOM OCCUPANCY RATES (per cent)						
<i>March quarter 1995</i>	66.4	71.6	55.2	68.3	79.8	68.2
<i>1996—</i>						
January	59.8	67.7	47.5	64.6	70.7	62.6
February	67.5	72.0	52.9	70.1	79.8	69.1
March	67.9	73.5	54.4	71.7	78.5	69.8
<i>March quarter 1996</i>	65.0	71.1	51.6	68.8	76.2	67.1
GUEST NIGHTS						
<i>March quarter 1995</i>	367,621	235,646	123,969	300,193	179,105	603,267
<i>1996—</i>						
January	127,530	83,086	35,117	109,453	66,046	210,616
February	118,974	73,472	32,493	98,124	61,829	192,446
March	124,914	80,837	34,837	107,256	63,658	205,751
<i>March quarter 1996</i>	371,418	237,395	102,447	314,833	191,533	608,813
BED OCCUPANCY RATES (per cent)						
<i>March quarter 1995</i>	41.2	45.3	36.6	43.5	46.7	42.7
<i>1996—</i>						
January	41.5	44.1	33.3	44.5	45.7	42.5
February	41.3	41.7	32.9	42.6	45.7	41.5
March	40.6	42.9	33.0	43.6	44.1	41.5
<i>March quarter 1996</i>	41.1	42.9	33.1	43.6	45.2	41.8
GUEST ARRIVALS						
<i>March quarter 1995</i>	204,917	135,180	80,573	178,867	80,657	340,097
<i>1996—</i>						
January	66,970	47,298	20,517	65,990	27,761	114,268
February	65,806	43,471	19,908	60,877	28,492	109,277
March	69,219	48,331	20,782	67,686	29,082	117,550
<i>March quarter 1996</i>	201,995	139,100	61,207	194,553	85,335	341,095
AVERAGE LENGTH OF STAY (days)						
<i>March quarter 1995</i>	1.8	1.7	1.5	1.7	2.2	1.8
<i>March quarter 1996</i>	1.8	1.7	1.7	1.6	2.2	1.8
TAKINGS FROM ACCOMMODATION (\$'000)						
<i>March quarter 1995</i>	16,898	8,064	3,961	10,348	10,654	24,963
<i>1996—</i>						
January	5,574	3,001	1,117	3,805	3,652	8,575
February	5,728	2,786	1,066	3,664	3,783	8,514
March	6,194	2,984	1,186	3,996	3,996	9,178
<i>March quarter 1996</i>	17,496	8,771	3,370	11,465	11,431	26,267

TABLE 6 — HOTELS, MOTELS AND GUEST HOUSES WITH FACILITIES BY ESTABLISHMENT SIZE, TASMANIA

Particulars	Establishment size (No. of rooms)						Total
	5-9	10-15	16-25	26-50	51-100	101+	
<b>ESTABLISHMENTS, CAPACITY AND EMPLOYMENT</b>							
<i>March quarter 1995—</i>							
Establishments	42	28	30	50	19	8	177
Guest rooms	289	319	613	1,700	1,210	1,249	5,380
Bed spaces	744	876	1,748	5,146	3,698	3,476	15,688
Employment (persons)	236	319	411	922	662	1,806	4,356
<i>March quarter 1996—</i>							
Establishments	43	28	31	50	20	8	180
Guest rooms	306	321	629	1,716	1,299	1,249	5,520
Bed spaces	783	888	1,762	5,115	4,032	3,419	15,999
Employment (persons)	230	339	436	947	745	1,846	4,543
<b>ROOM NIGHTS OCCUPIED</b>							
<i>March quarter 1995</i>	14,695	18,222	31,689	103,454	74,230	88,016	330,306
<i>1996—</i>							
January	5,198	5,802	11,359	32,252	24,880	27,569	107,060
February	5,112	5,898	11,699	33,276	25,528	29,133	110,646
March	5,556	6,212	13,014	35,961	27,964	30,793	119,500
<i>March quarter 1996</i>	15,866	17,912	36,072	101,489	78,372	87,495	337,206
<b>ROOM OCCUPANCY RATES (per cent)</b>							
<i>March quarter 1995</i>	56.5	63.5	57.4	67.6	68.2	78.3	68.2
<i>1996</i>							
January	54.8	58.3	58.3	60.6	61.8	71.2	62.6
February	57.6	63.4	64.1	66.9	67.8	80.4	69.1
March	58.6	62.4	66.7	67.6	69.4	79.5	69.8
<i>March quarter 1996</i>	57.0	61.3	63.0	65.0	66.3	77.0	67.1
<b>GUEST NIGHTS</b>							
<i>March quarter 1995</i>	25,722	31,463	60,543	196,317	145,161	144,061	603,267
<i>1996</i>							
January	9,044	10,684	22,236	64,143	54,596	49,913	210,616
February	8,617	10,143	20,507	58,692	47,636	46,851	192,446
March	9,253	10,645	23,012	63,603	50,526	48,712	205,751
<i>March quarter 1996</i>	26,914	31,472	65,755	186,438	152,758	145,476	608,813
<b>BED OCCUPANCY RATES (per cent)</b>							
<i>March quarter 1995</i>	38.4	39.9	38.5	42.4	43.6	46.0	42.7
<i>1996—</i>							
January	37.3	38.8	40.7	40.5	43.7	47.1	42.5
February	37.9	39.4	40.1	39.6	40.7	47.3	41.5
March	38.1	38.7	42.1	40.1	40.4	46.0	41.5
<i>March quarter 1996</i>	37.8	38.9	41.0	40.1	41.6	46.8	41.8
<b>GUEST ARRIVALS</b>							
<i>March quarter 1995</i>	15,817	18,849	36,427	121,763	90,474	56,767	340,097
<i>1996—</i>							
January	5,577	6,585	13,699	38,347	32,347	17,713	114,268
February	5,284	6,386	12,793	36,662	29,698	18,454	109,277
March	5,835	6,243	14,059	40,281	32,505	18,627	117,550
<i>March quarter 1996</i>	16,696	19,214	40,551	115,290	94,550	54,794	341,095
<b>AVERAGE LENGTH OF STAY (days)</b>							
<i>March quarter 1995</i>	1.6	1.7	1.7	1.6	1.6	2.5	1.8
<i>March quarter 1996</i>	1.6	1.6	1.6	1.6	1.6	2.7	1.8
<b>TAKINGS FROM ACCOMMODATION (\$'000)</b>							
<i>March quarter 1995</i>	839	971	1,846	6,654	5,982	8,671	24,963
<i>1996—</i>							
January	318	342	710	2,133	2,371	2,702	8,575
February	303	337	683	2,101	2,192	2,897	8,514
March	325	338	719	2,263	2,428	3,104	9,178
<i>March quarter 1996</i>	945	1,018	2,112	6,498	6,991	8,703	26,267

TABLE 7 — HOTELS, MOTELS AND GUEST HOUSES WITH FACILITIES BY STATISTICAL DIVISION, TASMANIA

Particulars	Greater Hobart (SD)			Southern (SD)			Northern (SD)		
	Licensed hotels with facilities	Motels and guest houses	Total	Licensed hotels with facilities	Motels and guest houses	Total	Licensed hotels with facilities	Motels and guest houses	Total
ESTABLISHMENTS, CAPACITY AND EMPLOYMENT									
<i>March quarter 1995</i>									
Establishments	23	27	50	14	10	24	31	22	53
Guest rooms	1,221	650	1,871	476	136	612	1,091	420	1,511
Bed spaces	3,212	2,002	5,214	1,449	470	1,919	3,252	1,366	4,618
Employment (persons)	1,564	289	1,853	255	65	320	1,154	144	1,298
<i>March quarter 1996--</i>									
Establishments	23	27	50	14	9	23	32	24	56
Guest rooms	1,224	662	1,886	478	133	611	1,142	467	1,609
Bed spaces	3,169	2,032	5,201	1,431	523	1,954	3,317	1,523	4,840
Employment (persons)	1,583	313	1,896	259	90	349	1,263	146	1,409
ROOM NIGHTS OCCUPIED									
<i>March quarter 1995</i>	86,158	47,124	133,282	25,037	8,403	33,440	63,711	24,768	88,479
<i>1996—</i>									
January	26,873	15,194	42,067	8,358	3,196	11,554	19,700	9,264	28,964
February	27,317	15,236	42,553	7,604	2,849	10,453	22,853	9,460	32,313
March	29,909	16,666	46,575	8,066	3,137	11,203	23,349	9,624	32,973
<i>March quarter 1996</i>	84,099	47,096	131,195	24,028	9,182	33,210	65,902	28,348	94,250
ROOM OCCUPANCY RATES (per cent)									
<i>March quarter 1995</i>	78.4	80.6	79.2	58.4	68.7	60.7	64.9	65.5	65.1
<i>1996—</i>									
January	70.8	74.0	72.0	56.4	77.5	61.0	55.6	64.0	58.1
February	77.0	79.4	77.8	54.9	73.9	59.0	69.0	69.9	69.3
March	78.8	81.2	79.7	54.4	76.1	59.1	66.0	66.5	66.1
<i>March quarter 1996</i>	75.5	78.2	76.4	55.2	75.9	59.7	63.4	66.7	64.4
GUEST NIGHTS									
<i>March quarter 1995</i>	143,352	91,467	234,819	52,227	19,654	71,881	111,878	49,359	161,237
<i>1996—</i>									
January	49,443	30,615	80,058	19,561	8,389	27,950	37,811	18,736	56,547
February	45,148	27,584	72,732	15,536	6,072	21,608	37,615	17,286	54,901
March	48,584	30,554	79,138	15,352	6,921	22,273	38,808	17,801	56,609
<i>March quarter 1996</i>	143,175	88,753	231,928	50,449	21,382	71,831	114,234	53,823	168,057
BED OCCUPANCY RATES (per cent)									
<i>March quarter 1995</i>	49.6	50.8	50.0	40.0	46.5	41.6	38.2	40.1	38.8
<i>1996—</i>									
January	50.3	48.6	49.7	44.1	51.7	46.1	36.8	39.7	37.7
February	49.1	46.8	48.2	37.4	40.0	38.1	39.1	39.1	39.1
March	49.5	48.5	49.1	34.6	42.7	36.8	37.7	37.7	37.7
<i>March quarter 1996</i>	49.6	48.0	49.0	38.7	44.9	40.4	37.8	38.8	38.2
GUEST ARRIVALS									
<i>March quarter 1995</i>	55,083	41,702	96,785	42,894	13,174	56,068	64,311	28,206	92,517
<i>1996—</i>									
January	18,409	14,393	32,802	15,307	4,637	19,944	18,974	11,002	29,976
February	18,306	13,717	32,023	12,706	4,162	16,868	20,081	10,220	30,301
March	19,096	14,645	33,741	12,934	4,488	17,422	21,340	11,051	32,391
<i>March quarter 1996</i>	55,811	42,755	98,566	40,947	13,287	54,234	60,395	32,273	92,668
AVERAGE LENGTH OF STAY (days)									
<i>March quarter 1995</i>	2.6	2.2	2.4	1.2	1.5	1.3	1.7	1.7	1.7
<i>March quarter 1996</i>	2.6	2.1	2.4	1.2	1.6	1.3	1.9	1.7	1.8
TAKINGS FROM ACCOMMODATION (\$'000)									
<i>March quarter 1995</i>	8,097	3,063	11,160	1,551	693	2,244	4,693	1,518	6,211
<i>1996—</i>									
January	2,547	1,068	3,615	594	396	990	1,538	579	2,117
February	2,549	984	3,532	495	316	811	1,782	576	2,358
March	2,836	1,052	3,887	507	349	856	1,811	588	2,399
<i>March quarter 1996</i>	7,931	3,103	11,034	1,596	1,061	2,657	5,131	1,743	6,874



TABLE 7 — HOTELS, MOTELS AND GUEST HOUSES WITH FACILITIES BY STATISTICAL DIVISION,  
TASMANIA—continued

Particulars	Mersey-Lyell (SD)			Total Tasmania			East Coast (a)
	Licensed hotels with facilities	Motels and guest houses	Total	Licensed hotels with facilities	Motels and guest houses	Total	Total
<b>ESTABLISHMENTS, CAPACITY AND EMPLOYMENT</b>							
<i>March quarter 1995—</i>							
Establishments	23	27	50	91	86	177	14
Guest rooms	723	663	1,386	3,511	1,869	5,380	465
Bed spaces	1,995	1,942	3,937	9,908	5,780	15,688	1,455
Employment (persons)	527	358	885	3,500	856	4,356	252
<i>March quarter 1996—</i>							
Establishments	23	28	51	92	88	180	14
Guest rooms	736	678	1,414	3,580	1,940	5,520	485
Bed spaces	2,007	1,997	4,004	9,924	6,075	15,999	1,606
Employment (persons)	554	335	889	3,659	884	4,543	292
<b>ROOM NIGHTS OCCUPIED</b>							
<i>March quarter 1995</i>	34,891	40,214	75,105	209,797	120,509	330,306	24,479
<i>1996—</i>							
January	11,400	13,075	24,475	66,331	40,729	107,060	8,989
February	12,341	12,986	25,327	70,115	40,531	110,646	7,910
March	13,996	14,753	28,749	75,320	44,180	119,500	8,612
<i>March quarter 1996</i>	37,737	40,814	78,551	211,766	125,440	337,206	25,511
<b>ROOM OCCUPANCY RATES (per cent)</b>							
<i>March quarter 1995</i>	53.6	67.4	60.2	66.4	71.6	68.2	58.5
<i>1996—</i>							
January	50.0	62.2	55.8	59.8	67.7	62.6	59.8
February	57.8	66.0	61.8	67.5	72.0	69.1	56.2
March	61.3	70.2	65.6	67.9	73.5	69.8	57.3
<i>March quarter 1996</i>	56.3	66.2	61.0	65.0	71.1	67.1	57.8
<b>GUEST NIGHTS</b>							
<i>March quarter 1995</i>	60,164	75,166	135,330	367,621	235,646	603,267	51,938
<i>1996—</i>							
January	20,715	25,346	46,061	127,530	83,086	210,616	21,382
February	20,675	22,530	43,205	118,974	73,472	192,446	16,086
March	22,170	25,561	47,731	124,914	80,837	205,751	16,672
<i>March quarter 1996</i>	63,560	73,437	136,997	371,418	237,395	608,813	54,140
<b>BED OCCUPANCY RATES (per cent)</b>							
<i>March quarter 1995</i>	33.5	43.0	38.2	41.2	45.3	42.7	39.7
<i>1996—</i>							
January	33.3	40.9	37.1	41.5	44.1	42.5	42.9
February	35.5	38.9	37.2	41.3	41.7	41.5	34.5
March	35.6	41.3	38.5	40.6	42.9	41.5	33.5
<i>March quarter 1996</i>	34.8	40.4	37.6	41.1	42.9	41.8	37.0
<b>GUEST ARRIVALS</b>							
<i>March quarter 1995</i>	42,629	52,098	94,727	204,917	135,180	340,097	40,400
<i>1996—</i>							
January	14,280	17,266	31,546	66,970	47,298	114,268	14,373
February	14,713	15,372	30,085	65,806	43,471	109,277	11,945
March	15,849	18,147	33,996	69,219	48,331	117,550	12,626
<i>March quarter 1996</i>	44,842	50,785	95,627	201,995	139,100	341,095	38,944
<b>AVERAGE LENGTH OF STAY (days)</b>							
<i>March quarter 1995</i>	1.4	1.4	1.4	1.8	1.7	1.8	1.3
<i>March quarter 1996</i>	1.4	1.4	1.4	1.8	1.7	1.8	1.4
<b>TAKINGS FROM ACCOMMODATION (\$'000)</b>							
<i>March quarter 1995</i>	2,557	2,791	5,348	16,898	8,064	24,963	1,639
<i>1996—</i>							
January	895	958	1,853	5,574	3,001	8,575	764
February	902	910	1,812	5,728	2,786	8,514	612
March	1,040	995	2,036	6,194	2,984	9,178	661
<i>March quarter 1996</i>	2,837	2,863	5,701	17,496	8,771	26,267	2,037

(a) The East Coast Tourist Area comprises Glamorgan/Spring Bay (M) and Break O' Day (M).

TABLE 8—HOTELS, MOTELS AND GUEST HOUSES WITH FACILITIES: STATISTICAL DIVISIONS

Statistical Divisions and selected Statistical Local Areas	Establish- ments	Guest rooms	Bed spaces	Employ- ment (persons)	Room nights occupied				Room occupancy rates (per cent)			
					Jan.	Feb.	Mar.	Mar. qtr	Jan.	Feb.	Mar.	Mar. qtr
					Clarence (C)	4	55	156	70	1,090	990	1,257
Glenorchy (C)	6	162	432	108	3,410	3,268	3,782	10,460	67.9	69.6	75.3	71.0
Hobart (C)												
Inner	6	432	1,053	226	10,015	9,801	10,899	30,715	74.8	78.2	81.4	78.1
Remainder	29	1,163	3,354	1,442	26,475	27,329	29,429	83,233	73.4	81.0	81.6	78.6
Total	35	1,595	4,407	1,668	36,490	37,130	40,328	113,948	73.8	80.3	81.6	78.5
Balance	5	74	206	50	1,077	1,165	1,208	3,450	46.9	54.3	52.7	51.2
Greater Hobart (SD)	50	1,886	5,201	1,896	42,067	42,553	46,575	131,195	72.0	77.8	79.7	76.4
Glamorgan/Spring Bay (M)	9	325	1,183	198	6,777	5,888	6,257	18,922	67.3	62.5	62.1	64.0
Tasman (M)	6	137	431	89	3,093	2,790	3,194	9,077	72.8	70.2	75.2	72.8
Balance	8	149	340	62	1,684	1,775	1,752	5,211	36.5	41.1	37.9	38.4
Southern (SD)	23	611	1,954	349	11,554	10,453	11,203	33,210	61.0	59.0	59.1	59.7
Break O'Day (M)	5	160	423	94	2,212	2,022	2,355	6,589	44.6	43.6	47.5	45.3
Launceston (C)												
Inner	10	474	1,336	368	8,850	10,921	11,191	30,962	60.2	79.4	76.2	71.8
Parts B & C	23	611	2,007	303	11,632	12,573	12,712	36,917	61.4	71.0	67.1	66.4
Total	33	1,085	3,343	671	20,482	23,494	23,903	67,879	60.9	74.7	71.1	68.7
Northern Midlands (M)—Pts A & B	3	25	67	17	484	484	507	1,475	62.5	66.8	65.4	64.8
West Tamar (M)—Pts A & B	7	124	384	119	1,694	1,740	1,549	4,983	44.1	48.4	40.3	44.2
Balance	8	215	623	508	4,092	4,573	4,659	13,324	61.4	73.3	69.9	68.1
Northern (SD)	56	1,609	4,840	1,409	28,964	32,313	32,973	94,250	58.1	69.3	66.1	64.4
Burnie (C)—Pts A & B	8	238	575	145	3,424	3,542	4,078	11,044	46.4	51.3	55.3	51.0
Central Coast (M)—Pts A & B	5	115	291	81	1,393	1,549	1,547	4,489	39.1	46.4	43.4	42.9
Circular Head (M)	3	94	240	82	1,919	1,847	2,275	6,041	65.9	67.8	78.1	70.6
Devonport (C)	9	242	702	132	3,649	3,881	4,196	11,726	48.6	55.3	55.9	53.2
Waratah/Wynyard (M)—Pts A & B	8	134	356	75	1,712	1,830	2,022	5,564	41.2	47.1	48.7	45.6
West Coast (M)	11	420	1,217	224	8,177	8,443	9,987	26,607	62.8	69.3	76.7	69.6
Balance	7	171	623	150	4,201	4,235	4,644	13,080	79.2	85.4	87.6	84.1
Mersey-Lyell (SD)	51	1,414	4,004	889	24,475	25,327	28,749	78,551	55.8	61.8	65.6	61.0
Total Tasmania	180	5,520	15,999	4,543	107,060	110,646	119,500	337,206	62.6	69.1	69.8	67.1

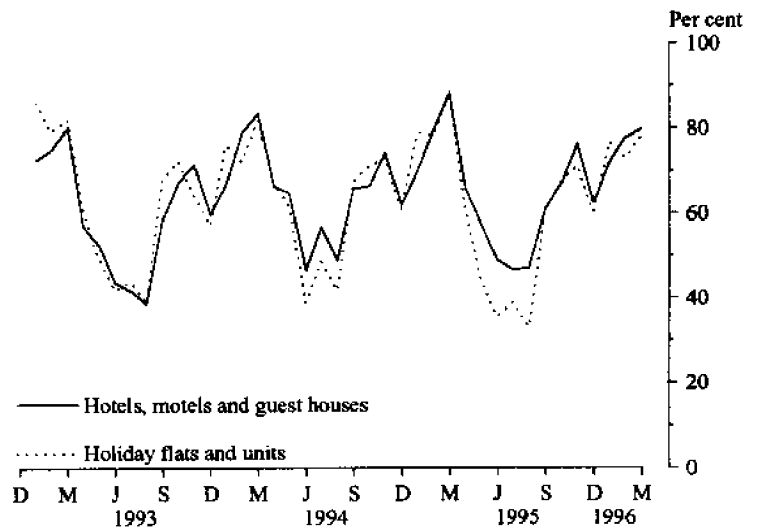
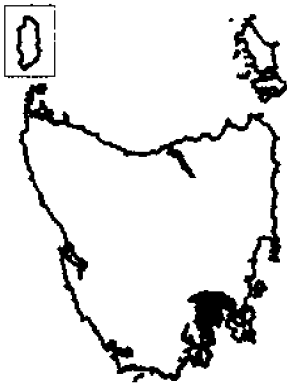
## AND SELECTED STATISTICAL LOCAL AREAS, TASMANIA, MARCH QUARTER 1996

<i>Guest nights</i>				<i>Guest arrivals</i>				<i>Takings from accommodation (\$'000)</i>			
<i>Jan.</i>	<i>Feb.</i>	<i>Mar.</i>	<i>Mar. qtr</i>	<i>Jan.</i>	<i>Feb.</i>	<i>Mar.</i>	<i>Mar. qtr</i>	<i>Jan.</i>	<i>Feb.</i>	<i>Mar.</i>	<i>Mar. qtr</i>
2,258	1,901	2,454	6,613	1,277	1,154	1,326	3,757	71	71	72	213
6,465	5,584	6,558	18,607	2,747	2,784	3,057	8,588	176	164	177	518
18,313	16,523	18,366	53,202	8,481	7,617	8,148	24,246	761	708	818	2,287
51,029	46,737	49,635	147,401	19,136	19,282	19,794	58,212	2,542	2,529	2,756	7,827
69,342	63,260	68,001	200,603	27,617	26,899	27,942	82,458	3,304	3,236	3,574	10,114
1,993	1,987	2,125	6,105	1,161	1,186	1,416	3,763	64	61	65	189
80,058	72,732	79,138	231,928	32,802	32,023	33,741	98,566	3,615	3,532	3,887	11,034
16,864	12,341	12,380	41,585	11,222	9,397	9,476	30,095	638	501	526	1,665
7,456	5,715	6,743	19,914	6,298	5,213	5,821	17,332	243	201	236	680
3,630	3,552	3,150	10,332	2,424	2,258	2,125	6,807	109	108	95	312
27,950	21,608	22,273	71,831	19,944	16,868	17,422	54,234	990	811	856	2,657
4,518	3,745	4,292	12,555	3,151	2,548	3,150	8,849	126	111	135	372
15,644	17,407	17,872	50,923	7,470	9,095	9,548	26,113	701	867	892	2,460
24,043	22,279	22,981	69,303	13,617	12,809	13,892	40,318	790	829	833	2,452
39,687	39,686	40,853	120,226	21,087	21,904	23,440	66,431	1,491	1,697	1,725	4,912
810	799	827	2,436	496	527	292	1,315	23	20	22	65
3,746	3,223	2,976	9,945	1,973	1,873	1,787	5,633	112	98	97	307
7,786	7,448	7,661	22,895	3,269	3,449	3,722	10,440	366	433	421	1,219
56,547	54,901	56,609	168,057	29,976	30,301	32,391	92,668	2,117	2,358	2,399	6,874
5,230	4,963	5,737	15,930	3,446	3,305	4,182	10,933	220	230	265	715
2,289	2,475	2,382	7,146	1,439	1,630	1,686	4,755	67	77	77	221
3,366	3,153	3,864	10,383	2,436	2,273	2,778	7,487	113	106	132	351
6,285	6,122	6,582	18,989	4,538	4,714	4,914	14,166	254	265	288	807
3,705	3,593	3,922	11,220	2,751	2,723	3,018	8,492	116	120	123	358
15,912	14,537	17,042	47,491	11,522	10,397	12,666	34,585	577	543	612	1,733
9,274	8,362	8,202	25,838	5,414	5,043	4,752	15,209	506	471	539	1,516
46,061	43,205	47,731	136,997	31,546	30,085	33,996	95,627	1,853	1,812	2,036	5,701
210,616	192,446	205,751	608,813	114,268	109,277	117,550	341,095	8,575	8,514	9,178	26,267

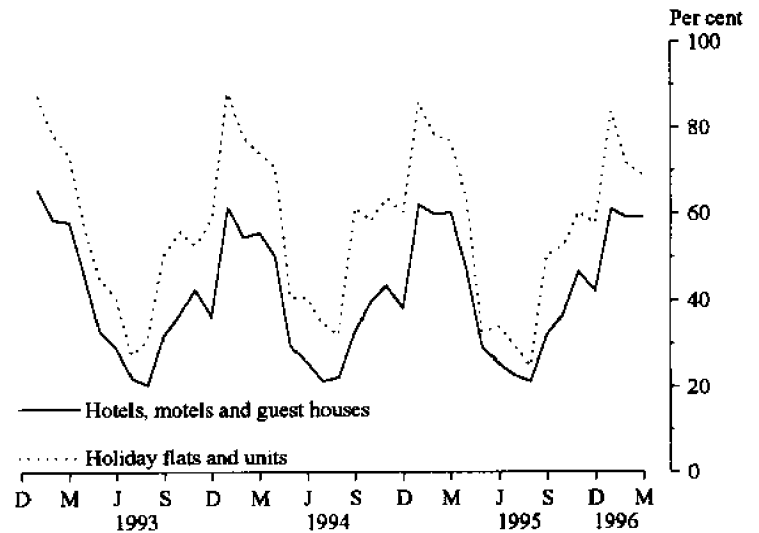
## MONTHLY ROOM/UNIT OCCUPANCY RATES

Graphs on these pages compare room occupancy rates for hotels, motels and guest houses with facilities with unit occupancy rates for holiday unit establishments for each Statistical Division and the East Coast Tourist area.

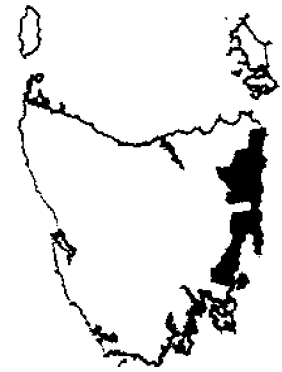
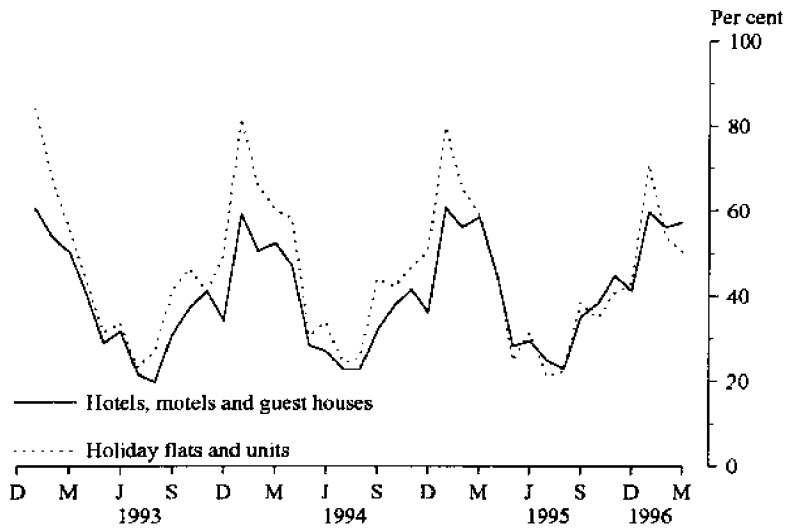
### GREATER HOBART STATISTICAL DIVISION



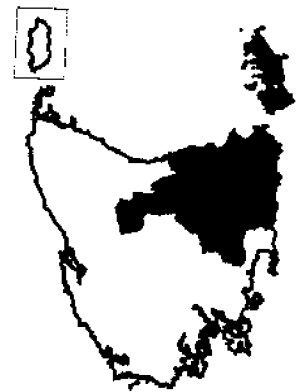
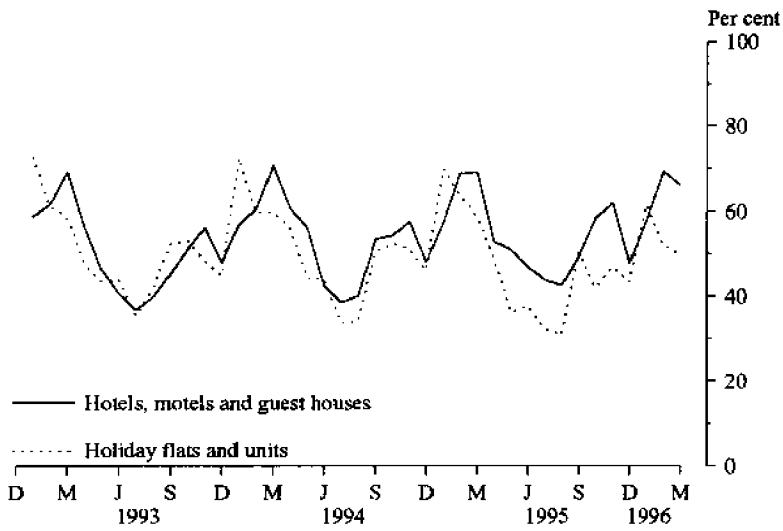
### SOUTHERN STATISTICAL DIVISION



**EAST COAST TOURIST AREA**



**NORTHERN STATISTICAL DIVISION**



**MERSEY-LYELL STATISTICAL DIVISION**

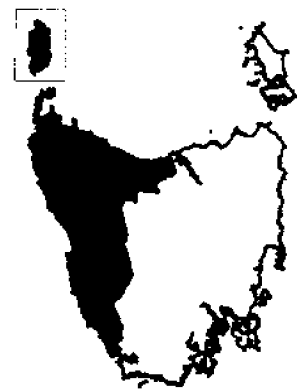
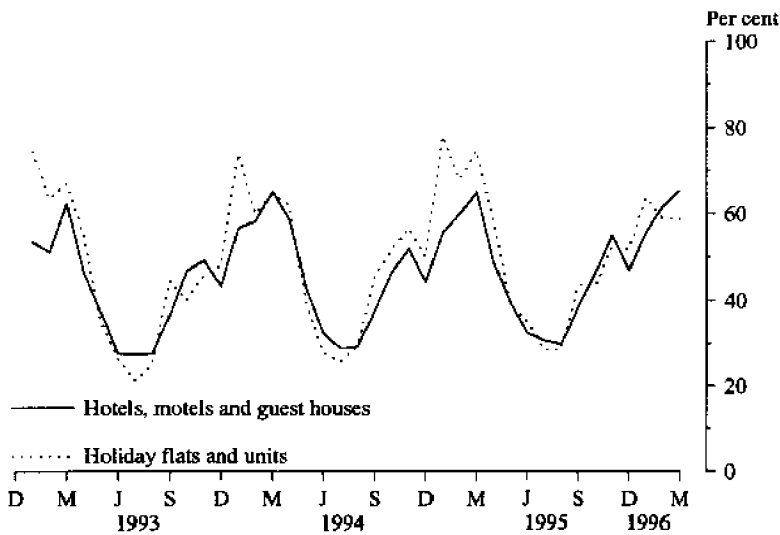


TABLE 9 — HOLIDAY FLATS, UNITS AND HOUSES BY STATISTICAL DIVISION AND SELECTED STATISTICAL AREAS, TASMANIA

Particulars	Northern (SD)				Total	Mersey-Lyell (SD)	Total Tasmania	East Coast (a)
	Greater Hobart (SD)	Southern (SD)	Greater Launceston and Central North (SSDs)	North Eastern (SSD)				
LETTING ENTITIES, CAPACITY AND EMPLOYMENT								
<i>March quarter 1995</i>								
Letting entities	13	9	11	7	18	15	55	11
Flats, units and houses								
Single bedroom	55	21	124	30	154	42	272	41
Multiple bedroom	179	81	140	71	211	124	595	95
<i>Total flats, units and houses</i>	<i>234</i>	<i>102</i>	<i>264</i>	<i>101</i>	<i>365</i>	<i>166</i>	<i>867</i>	<i>136</i>
Bed spaces	1,016	519	996	477	1,473	753	3,761	636
Employment (persons)	76	47	165	33	198	61	382	52
<i>March quarter 1996</i>								
Letting entities	13	9	11	7	18	14	54	11
Flats, units and houses								
Single bedroom	50	21	93	29	122	42	235	40
Multiple bedroom	183	80	139	72	211	121	595	96
<i>Total flats, units and houses</i>	<i>233</i>	<i>101</i>	<i>232</i>	<i>101</i>	<i>333</i>	<i>163</i>	<i>830</i>	<i>136</i>
Bed spaces	1,042	507	898	473	1,371	737	3,657	627
Employment (persons)	72	46	154	30	184	54	356	49
UNIT NIGHTS OCCUPIED								
<i>March quarter 1995</i>	<i>17,245</i>	<i>7,390</i>	<i>15,733</i>	<i>5,353</i>	<i>21,086</i>	<i>11,031</i>	<i>56,752</i>	<i>8,326</i>
<i>1996—</i>								
January	5,542	2,624	4,169	2,190	6,359	3,222	17,747	2,993
February	4,933	2,103	3,765	1,277	5,042	2,789	14,867	2,110
March	5,657	2,155	3,926	1,192	5,118	2,968	15,898	2,124
<i>March quarter 1996</i>	<i>16,132</i>	<i>6,882</i>	<i>11,860</i>	<i>4,659</i>	<i>16,519</i>	<i>8,979</i>	<i>48,512</i>	<i>7,227</i>
UNIT OCCUPANCY RATES (per cent)								
<i>March quarter 1995</i>	<i>81.9</i>	<i>80.5</i>	<i>66.2</i>	<i>58.9</i>	<i>64.2</i>	<i>73.8</i>	<i>72.7</i>	<i>68.0</i>
<i>1996—</i>								
January	76.7	83.8	58.0	69.9	61.6	63.8	69.0	71.0
February	73.0	71.8	56.0	43.6	52.2	59.0	61.8	53.5
March	78.3	68.8	54.6	38.1	49.6	58.7	61.8	50.4
<i>March quarter 1996</i>	<i>76.1</i>	<i>74.9</i>	<i>56.2</i>	<i>50.7</i>	<i>54.5</i>	<i>60.5</i>	<i>64.2</i>	<i>58.4</i>
UNIT LETTINGS								
<i>March quarter 1995</i>	<i>5,617</i>	<i>4,554</i>	<i>7,869</i>	<i>2,336</i>	<i>10,205</i>	<i>5,801</i>	<i>26,177</i>	<i>4,307</i>
<i>1996—</i>								
January	1,954	1,449	2,173	736	2,909	1,715	8,027	1,377
February	1,781	1,319	2,183	548	2,731	1,544	7,375	1,156
March	2,084	1,549	2,541	520	3,061	1,705	8,399	1,290
<i>March quarter 1996</i>	<i>5,819</i>	<i>4,317</i>	<i>6,897</i>	<i>1,804</i>	<i>8,701</i>	<i>4,964</i>	<i>23,801</i>	<i>3,823</i>
AVERAGE LENGTH OF STAY (days)								
<i>March quarter 1995</i>	<i>3.1</i>	<i>1.6</i>	<i>2.0</i>	<i>2.3</i>	<i>2.1</i>	<i>1.9</i>	<i>2.2</i>	<i>1.9</i>
<i>1996—</i>								
January	2.8	1.8	1.9	3.0	2.2	1.9	2.2	2.2
February	2.8	1.6	1.7	2.3	1.8	1.8	2.0	1.8
March	2.7	1.4	1.5	2.3	1.7	1.7	1.9	1.6
<i>March quarter 1996</i>	<i>2.8</i>	<i>1.6</i>	<i>1.7</i>	<i>2.6</i>	<i>1.9</i>	<i>1.8</i>	<i>2.0</i>	<i>1.9</i>
TAKINGS FROM ACCOMMODATION (\$'000)								
<i>March quarter 1995</i>	<i>1,432</i>	<i>662</i>	<i>1,297</i>	<i>285</i>	<i>1,582</i>	<i>715</i>	<i>4,391</i>	<i>649</i>
<i>1996—</i>								
January	476	264	408	123	531	206	1,477	262
February	397	184	324	76	400	193	1,174	176
March	424	183	335	60	395	182	1,184	156
<i>March quarter 1996</i>	<i>1,297</i>	<i>632</i>	<i>1,066</i>	<i>260</i>	<i>1,326</i>	<i>580</i>	<i>3,835</i>	<i>593</i>

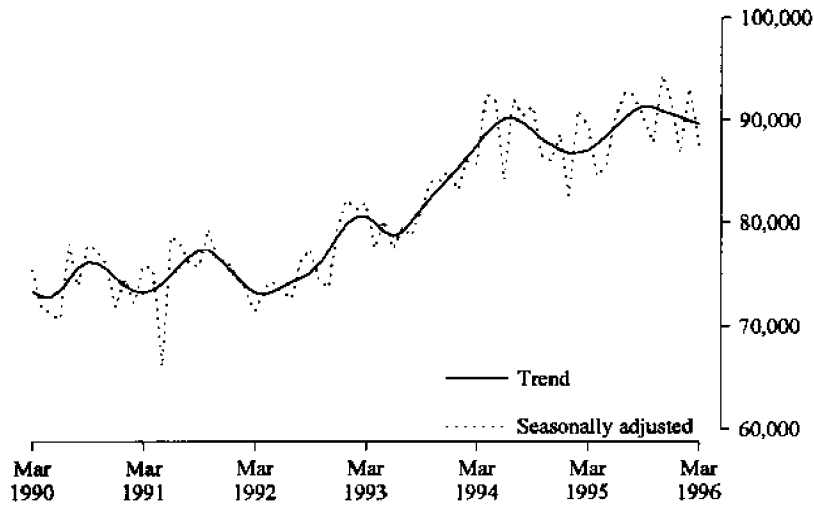
(a) The East Coast Tourist Area comprises Glamorgan/Spring Bay (M) and Break O'Day (M).

TABLE 10—CARAVAN PARKS BY STATISTICAL DIVISION AND SELECTED STATISTICAL AREAS, TASMANIA

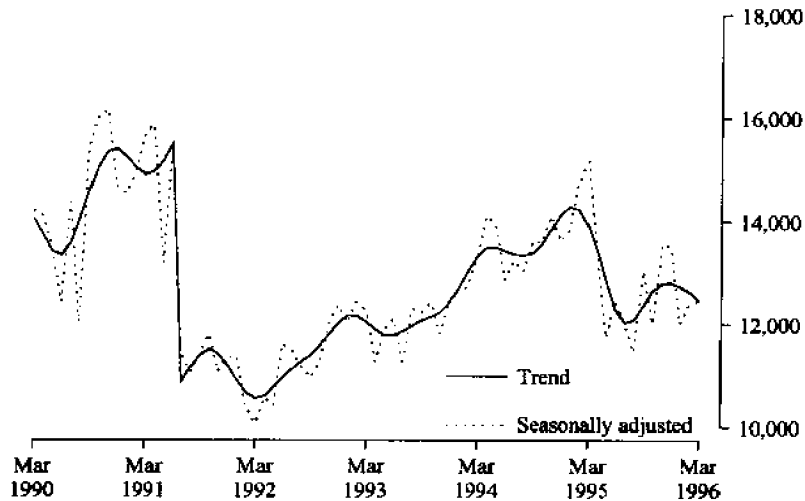
Particulars	Northern (SD)				Total	Mersey-Lyell (SD)	Total Tasmania	East Coast (a)
	Greater Hobart (SD)	Southern (SD)	Greater Launceston and Central North (SSDs)	North Eastern (SSD)				
<b>ESTABLISHMENTS, CAPACITY AND EMPLOYMENT</b>								
<i>March quarter 1995—</i>								
Establishments	8	18	12	8	20	29	75	11
Capacity								
On-site vans	80	67	56	24	80	166	393	55
Other powered sites	298	791	492	532	1,024	1,484	3,597	655
Unpowered sites	266	382	557	549	1,106	654	2,408	525
Cabins, flats, etc.	64	108	72	20	92	172	436	77
<i>Total capacity</i>	<i>708</i>	<i>1,348</i>	<i>1,177</i>	<i>1,125</i>	<i>2,302</i>	<i>2,476</i>	<i>6,834</i>	<i>1,312</i>
Sites occupied by long-term guests	102	27	85	8	93	248	470	30
Other sites permanently reserved	7	339	103	294	397	295	1,038	359
Employment (persons)	33	86	39	22	61	90	270	51
<i>March quarter 1996—</i>								
Establishments	7	18	12	8	20	27	72	11
Capacity								
On-site vans	63	67	51	23	74	162	366	52
Other powered sites	268	800	478	504	982	1,503	3,553	667
Unpowered sites	258	358	307	556	863	640	2,119	505
Cabins, flats, etc.	65	146	83	20	103	172	486	87
<i>Total capacity</i>	<i>654</i>	<i>1,371</i>	<i>919</i>	<i>1,103</i>	<i>2,022</i>	<i>2,477</i>	<i>6,524</i>	<i>1,311</i>
Sites occupied by long-term guests	53	27	74	10	84	258	422	31
Other sites permanently reserved	9	358	105	299	404	326	1,097	373
Employment (persons)	32	86	43	25	68	87	273	58
<b>SITE NIGHTS OCCUPIED</b>								
<i>March quarter 1995</i>	<i>24,474</i>	<i>59,719</i>	<i>30,763</i>	<i>35,933</i>	<i>66,696</i>	<i>90,455</i>	<i>241,344</i>	<i>52,999</i>
<i>1996—</i>								
January	7,789	24,284	11,278	16,172	27,450	38,578	98,101	21,592
February	6,610	18,797	10,207	11,188	21,395	29,593	76,395	16,170
March	7,109	19,177	10,919	11,114	22,033	27,041	75,360	16,790
<i>March quarter 1996</i>	<i>21,508</i>	<i>62,258</i>	<i>32,404</i>	<i>38,474</i>	<i>70,878</i>	<i>95,212</i>	<i>249,856</i>	<i>54,552</i>
<b>SITE OCCUPANCY RATES (per cent)</b>								
<i>March quarter 1995</i>	<i>38.4</i>	<i>49.2</i>	<i>29.0</i>	<i>35.5</i>	<i>32.2</i>	<i>40.6</i>	<i>39.2</i>	<i>44.9</i>
<i>1996—</i>								
January	38.4	57.1	39.6	47.3	43.8	50.2	48.5	53.1
February	34.9	47.3	38.3	35.0	36.5	41.2	40.4	42.5
March	35.1	45.1	38.3	32.5	35.2	35.2	37.3	41.3
<i>March quarter 1996</i>	<i>36.1</i>	<i>49.9</i>	<i>38.7</i>	<i>38.3</i>	<i>38.5</i>	<i>42.2</i>	<i>42.1</i>	<i>45.7</i>
<b>TAKINGS FROM ACCOMMODATION (\$'000)</b>								
<i>March quarter 1995</i>	<i>480</i>	<i>740</i>	<i>431</i>	<i>225</i>	<i>656</i>	<i>1,010</i>	<i>2,886</i>	<i>539</i>
<i>1996—</i>								
January	172	355	163	119	282	439	1,249	255
February	175	274	144	53	197	353	1,000	189
March	160	215	154	49	203	299	878	157
<i>March quarter 1996</i>	<i>507</i>	<i>845</i>	<i>461</i>	<i>221</i>	<i>683</i>	<i>1,091</i>	<i>3,126</i>	<i>601</i>

(a) The East Coast Tourist Area comprises Glamorgan/Spring Bay (M) and Break O' Day (M).

## HOTEL/MOTEL ROOM NIGHTS



## HOLIDAY UNIT NIGHTS



**TABLE 11. HOTEL & MOTEL ETC. ROOM NIGHTS, HOLIDAY UNIT NIGHTS AND CARAVAN PARK SITE NIGHTS: SEASONALLY ADJUSTED AND TREND ESTIMATES**

		Hotel, motel etc. with facilities, room nights		Holiday unit nights		Caravan park site nights	
		Seasonally adjusted	Trend	Seasonally adjusted	Trend	Seasonally adjusted	Trend
1994	January	83,197	85,334	12,660	12,704	57,698	59,476
	February	85,954	86,418	12,736	13,025	58,343	59,611
	March	85,705	87,510	13,332	13,317	60,093	60,144
	April	92,496	88,641	14,124	13,483	64,568	61,031
	May	91,910	89,620	13,901	13,497	61,895	61,990
	June	84,244	90,136	12,859	13,421	59,465	62,929
	July	92,055	90,208	13,241	13,353	65,256	63,887
	August	90,459	89,745	13,033	13,331	65,559	64,929
	September	91,388	88,951	13,623	13,387	64,863	65,862
	October	86,595	88,173	13,592	13,568	65,403	66,368
	November	86,023	87,605	14,120	13,859	71,036	66,322
	December	88,640	87,114	13,618	14,134	64,909	65,847
1995	January	82,686	86,788	13,824	14,279	62,806	65,360
	February	90,988	86,814	14,743	14,232	64,669	65,132
	March	89,351	87,101	15,177	13,921	64,292	65,022
	April	84,549	87,726	13,330	13,415	67,573	65,045
	May	85,627	88,471	11,740	12,815	65,425	65,105
	June	90,403	89,313	12,448	12,291	64,886	65,096
	July	92,641	90,238	12,002	12,031	64,234	65,096
	August	92,331	90,945	11,464	12,097	63,446	65,356
	September	90,259	91,397	13,040	12,375	67,549	65,705
	October	87,788	91,311	12,014	12,657	65,293	66,022
	November	94,390	90,935	13,553	12,794	68,130	66,222
	December	91,832	90,621	13,488	12,808	67,575	66,287
1996	January	86,748	90,308	12,023	12,733	63,380	66,384
	February	93,094	89,928	12,396	12,624	64,151	66,622
	March	87,466	89,609	12,487	12,451	70,783	66,835



TABLE 12 — VISITOR HOSTELS BY STATISTICAL DIVISION, TASMANIA

Particulars	Greater Hobart (SD)	Southern (SD)	Northern (SD)	Mersey-Lyell (SD)	Total Tasmania
ESTABLISHMENTS, CAPACITY AND EMPLOYMENT					
<i>March quarter 1995</i>					
Establishments	8	16	10	9	43
Bed spaces	444	435	305	602	1,786
Employment (persons)	43	28	18	26	115
<i>March quarter 1996 —</i>					
Establishments	6	16	11	8	41
Bed spaces	321	532	332	542	1,727
Employment (persons)	30	39	19	24	112
GUEST NIGHTS					
<i>March quarter 1995</i>					
	16,824	13,362	5,168	11,252	46,606
<i>1996 —</i>					
January	5,596	6,576	2,108	5,436	19,716
February	4,932	3,892	1,731	3,890	14,445
March	4,275	4,591	1,381	3,747	13,994
<i>March quarter 1996</i>					
	14,803	15,059	5,220	13,073	48,155
BED OCCUPANCY RATES (per cent)					
<i>March quarter 1995</i>					
	42.1	34.1	18.8	20.8	29.0
<i>1996 —</i>					
January	56.2	39.9	20.5	32.4	36.8
February	53.0	25.2	18.0	24.7	28.8
March	43.0	27.8	13.4	22.3	26.1
<i>March quarter 1996</i>					
	50.7	31.1	17.3	26.5	30.6
GUEST ARRIVALS					
<i>March quarter 1995</i>					
	8,398	8,829	3,967	7,134	28,328
<i>1996</i>					
January	3,289	4,304	1,586	3,829	13,008
February	2,916	2,702	1,321	2,914	9,853
March	2,439	2,810	1,078	3,020	9,347
<i>March quarter 1996</i>					
	8,644	9,816	3,985	9,763	32,208
AVERAGE LENGTH OF STAY (days)					
<i>March quarter 1995</i>					
	2.0	1.5	1.3	1.6	1.6
<i>1996</i>					
January	1.7	1.5	1.3	1.4	1.5
February	1.7	1.4	1.3	1.3	1.5
March	1.8	1.6	1.3	1.2	1.5
<i>March quarter 1996</i>					
	1.7	1.5	1.3	1.3	1.5
TAKINGS FROM ACCOMMODATION (\$'000)					
<i>March quarter 1995</i>					
	210	149	52	135	547
<i>1996 —</i>					
January	70	80	22	65	236
February	62	49	18	47	175
March	53	55	15	47	169
<i>March quarter 1996</i>					
	184	183	54	158	580

**TABLE 13. PASSENGER ARRIVALS AND DEPARTURES, TASMANIA,  
INTERSTATE AND INTERNATIONAL (a)(d)**  
(Source: Tourism, Sport & Recreation)

Period	Arrivals			Total Departures (b)	Cruise Ships (c)		
	By air		By sea		Arrivals	Departures	
	Interstate	International					
1988	571,344	8,625	101,572	681,541	683,635	5,497	6,161
1989	449,481	8,489	118,646	576,616	591,152	4,149	4,149
1990	555,631	8,629	120,004	684,264	679,833	3,255	3,255
1991	625,366	5,897	131,375	762,638	764,731	6,720	6,663
1992	652,092	4,428	114,969	771,489	761,109	4,608	4,608
1993	694,244	5,144	115,381	814,769	814,835	2,033	2,033
1994	745,508	4,166	128,644	878,318	880,936	6,592	6,592
1995	811,784	3,982	116,869	932,635	931,278	6,199	6,199
1993-							
October	57,362	434	7,965	65,761	65,042	-	-
November	59,592	393	8,561	68,546	66,733	-	-
December	74,056	391	15,348	89,795	72,362	600	600
1994-							
January	73,470	473	12,536	86,479	103,610	1,596	1,596
February	63,506	413	12,324	76,243	69,690	2,470	2,470
March	66,848	414	13,054	80,316	85,030	1,064	1,064
April	62,519	502	11,732	74,753	78,095	-	-
May	50,076	242	8,151	58,469	70,924	-	-
June	52,737	167	7,629	60,533	56,244	-	-
July	52,995	186	6,983	60,164	63,737	-	-
August	50,447	250	7,199	57,896	61,996	-	-
September	69,099	340	13,430	82,869	66,659	-	-
October	61,361	422	11,466	73,249	71,846	980	980
November	63,701	338	10,707	74,746	73,918	482	482
December	78,749	419	13,433	92,601	79,187	-	-
1995-							
January	80,818	318	12,430	93,566	115,126	1,368	1,368
February	78,700	269	11,704	90,673	81,727	1,772	1,772
March	68,790	351	13,087	82,228	86,348	659	659
April	66,840	423	9,584	76,847	83,918	-	-
May	53,364	277	8,368	62,009	70,563	-	-
June	57,146	211	7,678	65,035	62,555	-	-
July	56,761	294	5,793	62,848	59,312	-	-
August	58,124	240	4,027	62,391	65,381	-	-
September	73,105	407	11,150	84,662	72,559	-	-
October	65,079	346	10,889	76,314	75,628	-	-
November	68,990	394	10,187	79,571	77,855	810	810
December	84,067	452	11,972	96,491	80,306	1,590	1,590
1996-							
January	83,246	384	12,756	96,386	114,160	2,806	2,806
February	74,239	377	10,926	85,542	79,106	1,630	1,630
March	71,858	503	10,998	83,359	89,056	-	-

(a) The following persons are not included in these statistics : passengers under three years of age accompanied by an adult ; passengers travelling on chartered flights with minor carriers ; passengers travelling on private or VIP flights.

(b) The proportion of departing passengers who were visitors was shown to be about 58 per cent in the 1981 Tasmanian Visitor Survey, around 55 per cent in the 1984 TVS, about 53 per cent in the 1986 TVS, nearly 60 per cent in the 1988 TVS, close to 65 per cent in the 1990 TVS, almost 58 per cent in the 1991 TVS, almost 55 per cent in the 1992 TVS, just over 58 per cent in the 1993 TVS and almost 60 per cent in the 1994 TVS.

(c) Cruise ship statistics were not collected before November 1986 and are not included in Total Arrivals and Total Departures.

(d) The domestic airline pilots dispute commenced on 18 August 1989 with the pilots working restricted hours (9 a.m to 5 p.m). The pilots were suspended on 23 August 1989.

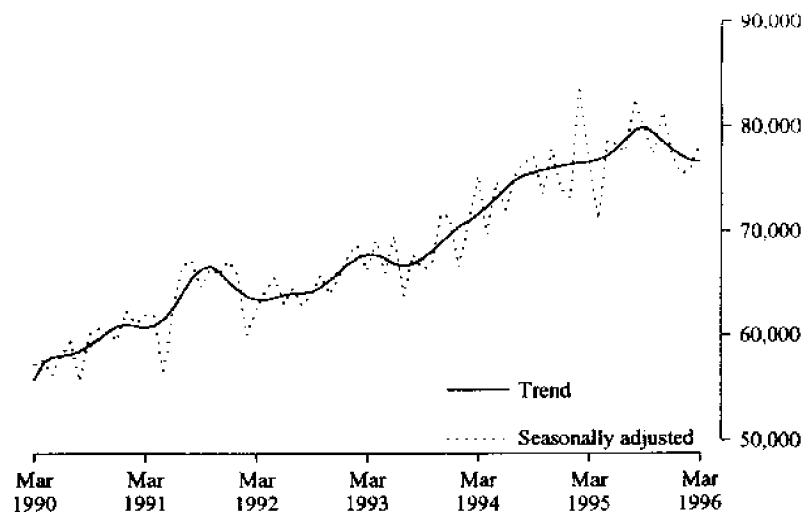
**TABLE 14. TOTAL PASSENGER ARRIVALS BY AIR AND SEA INTO TASMANIA :  
SEASONALLY ADJUSTED AND TREND SERIES (a)(b)**

Period		Original	Seasonally adjusted (a)	Trend
March	1989	64,965	56,778	57,706
	1990	58,823	57,293	55,809
	1991	67,678	61,988	60,733
	1992	65,712	62,409	63,413
	1993	70,491	66,232	67,706
	1994	80,316	75,352	71,636
	1995	82,228	76,584	76,588
	1996	83,359	78,475	76,683
1993-				
	October	65,761	66,776	68,004
	November	68,546	71,596	68,840
	December	89,795	71,295	69,682
1994-				
	January	86,479	66,597	70,439
	February	76,243	70,738	71,031
	March	80,316	75,352	71,636
	April	74,753	69,708	72,374
	May	58,469	74,763	73,233
	June	60,533	72,016	74,142
	July	60,164	75,259	74,934
	August	57,896	76,522	75,355
	September	82,869	77,162	75,601
	October	73,249	73,562	75,854
	November	74,746	77,860	76,035
	December	92,601	74,050	76,229
1995-				
	January	93,566	73,207	76,394
	February	90,673	83,888	76,506
	March	82,228	76,584	76,588
	April	76,847	71,159	76,814
	May	62,009	78,682	77,220
	June	65,035	78,253	77,911
	July	62,848	77,488	78,763
	August	62,391	82,576	79,582
	September	84,662	79,672	79,889
	October	76,314	77,332	79,374
	November	79,571	81,289	78,567
	December	96,491	77,326	77,814
1996-				
	January	96,386	75,517	77,209
	February	85,542	75,860	76,761
	March	83,359	78,475	76,683

(a) There is an annual recalculation of seasonal adjustment factors to include the most recent year's arrivals. This occurs at the end of each financial year and may cause revisions to previously-published seasonally-adjusted and trend figures, as can be seen in Table 14. A full printout of seasonally-adjusted and trend series figures dating back to 1971 can be obtained through the publication officer for this publication (Eddie Oakford).

(b) The domestic airline dispute commenced on 18 August 1989 with the pilots working restricted hours (9 a.m. to 5 p.m). The pilots were suspended on 23 August 1989.

#### TOTAL ARRIVALS IN TASMANIA



# EXPLANATORY NOTES

.....

## INTRODUCTION

**1** This publication contains data for Tasmania from a quarterly survey of tourist accommodation establishments.

## SCOPE

**2** Tourist accommodation establishments currently included in the survey comprise two groups:

- Establishments which provide predominantly short-term accommodation (i.e. for periods of less than 2 months) to the general public. These include:
  - *Hotels, motels and guest houses, with facilities* being hotels licensed to operate a public bar and motels, private hotels and guest houses all of which provide a bath (or shower) and toilet in most guest rooms and have breakfast available for guests. NOTE: From December quarter 1993, hotel, motel and guest house establishments with fewer than five rooms have been formally excluded from the scope of this statistical collection.
  - *Holiday flats, units and houses* (excluding establishments predominantly operated on a time share basis) which are operated by owners, managers or real estate agents who have sole letting rights to at least five flats, units or houses for short-term letting. They are mainly self-contained in terms of cooking, bath (or shower) and toilet facilities and do not have breakfast available for guests. Data for holiday flats, units and houses include short-term owner occupation as well as paying guest occupation.
  - *Visitor hostels* which provide accommodation to visitors on a bed basis (rather than by the room). This category does not include establishments providing charity type accommodation (e.g. Salvation Army hostels) nor hotels, motels and guest houses without in-room facilities which provide accommodation on a per room basis.
  - *Caravan parks* which provide either predominantly short-term (i.e. for periods of less than 2 months) or predominantly long-term (i.e. for periods of 2 months or more) accommodation to the general public and which provide powered sites for caravans and toilet, shower and laundry facilities for guests.

**3** Data collected and published for each type of establishment (other than holiday flats, units and houses) include both long-term and short-term guests at these establishments.

**4** Establishments which provide more than one type of accommodation (e.g. a motel with attached caravan park) are treated as two or more separate establishments. However, self-contained units, flats, cabins, etc. attached to hotels, motels or to caravan parks are included in the capacity for those establishments and not treated as separate holiday flat, unit or house establishments.

## AUSTRALIAN STANDARD GEOGRAPHICAL CLASSIFICATION

**5** Statistics presented in this publication have been classified according to the Australian Standard Geographic Classification (ASGC), Edition 2.5. This classification incorporates a number of hierarchic structures of geographic areas. The appropriate spatial units of the main structure of the ASGC used in this publication are defined as follows.

# EXPLANATORY NOTES

.....

AUSTRALIAN STANDARD  
GEOGRAPHICAL CLASSIFICATION  
continued

STATISTICAL LOCAL AREAS (SLAs) are legal Local Government Areas or parts thereof, which serve as the smallest type of spatial unit considered appropriate for the presentation of statistics and which add, without gaps or overlaps, to;

STATISTICAL SUBDIVISIONS (SSDs) which in turn represent another, higher hierarchic level and add, without gaps or overlaps, to;

STATISTICAL DIVISIONS (SDs) which in turn add, without gaps or overlaps, to;

*Total Tasmania.*

For more detailed information, refer to the ASGC (1216.0).

UNPUBLISHED STATISTICS

**6** The ABS may make available on request certain unpublished tourist accommodation statistics. A charge may be made for this information.

RELATED PUBLICATIONS

**7** Publications for Australia, and each State and Territory, are released by the respective offices of the ABS. Tourist accommodation statistics for past quarters are available on request. Other ABS publications which may be of interest include:

- *Directory of Tourism Statistics* (1130.0) (irregular: first and latest issue; 1991)
- *Overseas Arrivals and Departures, Australia* (3401.0) (monthly)
- *Tourism Indicators, Australia* (8634.0) (quarterly)
- *Tourism Accommodation, Australia* (8635.0) (quarterly)

**8** Current publications produced by the ABS are listed in the *Catalogue of Publications and Products* (1101.0). The ABS also issues the *Release Advice* (1105.0) on Tuesdays and Fridays which lists publications to be released in the next few days. Both the *Catalogue* and *Release Advice* are available from any ABS office.

SYMBOLS AND OTHER USAGES

n.a. not available

n.p. not available for publication but included in totals where applicable

r revised

.. not applicable

— nil

— break in continuity of the series (where drawn across a column between two consecutive figures)

**9** Where figures have been rounded, discrepancies may occur between totals and the sums of the component items.

# GLOSSARY



<b>Average length of stay</b>	<p>Average length of stay is expressed in numbers of days and calculated:</p> <ul style="list-style-type: none"> <li>▪ for hotels, motels and guest houses, by dividing <i>Guest nights</i> by <i>Guest arrivals</i> and</li> <li>▪ for holiday flats, units and houses, by dividing <i>Unit nights occupied</i> by <i>Unit lettings</i>.</li> </ul>
<b>Bed spaces</b>	Three-quarter beds are counted as one bed space; double beds as two bed spaces. Cots are excluded.
<b>Capacity</b>	Capacity in terms of <i>Guest rooms</i> , <i>Bed spaces</i> , <i>Holiday units</i> or <i>Caravan park sites</i> , etc. is the maximum number available to accommodate paying guests during the survey period. Capacity closed temporarily for seasonal reasons is included.
<b>Caravan park capacity</b>	The total number of <i>On-site vans</i> , <i>Other powered sites</i> , <i>Unpowered sites</i> and <i>Cabins</i> , etc.
<b>Employment</b>	The number of persons working at accommodation establishments at the end of the survey period (including working proprietors and those working on other than accommodation activities).
<b>Establishments</b>	For hotels, motels and guest houses, caravan parks and visitor hostels, the number of establishments within the scope of the survey which operated for any part of the survey period, or which closed temporarily for the quarter for seasonal reasons.
<b>Guest arrivals</b>	The total number of paying guests counted only on the first night they stayed at the accommodation establishment.
<b>Letting entities</b>	For holiday flats, units and houses, the number of owners, managers or real estate agents within the scope of the survey who operated for any part of the survey period.
<b>Occupancy</b>	<p>Occupancy in terms of <i>Room nights</i>, <i>Unit nights</i> or <i>Site nights occupied</i> refers to the total number of nights each guest room, holiday unit or caravan park site, etc. was occupied during the survey period. NOTE: From September quarter 1992, caravan park sites, etc. permanently reserved for 2 months or more at the end of the survey period but only casually occupied by their tenants have been recorded continuously as <i>Site nights occupied</i> irrespective of whether the tenants of individual sites were in residence on any particular night.</p> <p>Occupancy in terms of <i>Guest nights</i> refers to the total number of nights each paying guest stayed during the survey period.</p>
<b>Occupancy rates</b>	<p><i>Occupancy rates</i> represent occupancy expressed as a percentage of total capacity available during the survey period, e.g.</p> $\text{Room occupancy rate (\%)} \text{ for the period} = \frac{\text{Room nights occupied}}{(\text{Guest rooms}) \times (\text{No. of days in the period})} \times 100$ <p>providing that, for establishments closing (other than for seasonal reasons) or opening during the survey period, the denominator of the above expression includes only operating periods.</p>



## GLOSSARY

.....

- Other sites permanently reserved** The total number of powered and unpowered sites, on-site vans and cabins, etc. continuously let for 2 months or more by the end of the survey period to tenants who occupy the sites only on a casual or sporadic basis. Separate data for this item are available only from September quarter 1992.
- Room nights available** The number of guest rooms available multiplied by the number of days for which they were available during the survey period. Including operating periods only for establishments closing (other than for seasonal reasons) or opening during the survey period.
- Sites occupied by long-term guests** The total number of sites, etc. occupied at the end of the survey period by guests who have stayed continuously for 2 months or more.
- Star grading** The grading of hotels and motels with facilities based on the classification system used by members of the Australian Automobile Association (AAA). The gradings are allocated according to a points system based on the amenities and facilities available to guests. Details of the grading scheme are contained in the RACV-RAASA members' publication *Accommodation Australia*, or the individual tour guides produced by members of the AAA. For the purpose of classifying establishments to a star grading in this publication, 'half' star gradings are ignored (e.g. a two and a half star grading has been shown as two star).
- Takings from accommodation** Revenue received from the provision of accommodation. Takings from meals are excluded. Takings from accommodation for each month generally represent the takings received during that month. Where payments are received in advance of, or after, the provision of accommodation to guests, the monthly figure for takings from accommodation may not necessarily bear a direct relationship to the number of guests accommodated during the month. Rental and storage fees paid to caravan parks for the keeping of private vans in parks are included in the takings of the month they are received.
- Unit lettings** The total number of times a holiday flat, unit or house was occupied by a new tenant, counted only on the first night it was occupied by the new tenant.



## FOR MORE INFORMATION

The ABS publishes a wide range of information on Australia's economic and social conditions. A catalogue of publications and products is available from any of our offices (see below).

### INFORMATION CONSULTANCY SERVICES

Information tailored to special needs of clients can be obtained from the Information Consultancy Service available at ABS Offices (see below).

### ABS PRODUCTS

A large number of ABS products is available from the ABS Bookshops (see below). The ABS also provides a subscription service – you can telephone the ABS Subscription Service Australia wide toll free on 1800 0206 08.

### ELECTRONIC SERVICES

A large range of data is available via on-line services, diskette, magnetic tape, tape cartridge and CD ROM. For more details about our electronic data services, contact any ABS office (see below) or email us at:

X.400 (C:Australia,PUB:Telememo,O:ABS,FN:STAT,SN:INFO)  
Internet Stat.info@abs.telememo.au  
Keylink STAT.INFO/ABS

You can visit us on the Internet at: <http://www.statistics.gov.au>

### GENERAL SALES AND INQUIRIES

- Sydney 02 268 4611
  - Adelaide 08 237 7100
  - Melbourne 03 9615 7755
  - Hobart 002 20 5800
  - Brisbane 07 3222 6351
  - Darwin 089 43 2111
  - Perth 09 360 5140
  - Canberra 06 252 6627
- Information Services, ABS  
PO Box 10, Belconnen ACT 2616



2863560003960  
ISSN 0312-6900

RRP \$14.50

© Commonwealth of Australia 1996

Produced by the Australian Government Publishing Service